

Sligh

Installation Instructions



Home Entertainment

9600-1/2/3-CA

9600-1-CA

9600-1/6-CA

ASSEMBLY / OPERATION INSTRUCTIONS
Pocket Door Wide Screen TV cabinet

TOOLS REQUIRED

Allen wrench (provided)
Level
Phillips head screwdriver

PARTS ENCLOSED

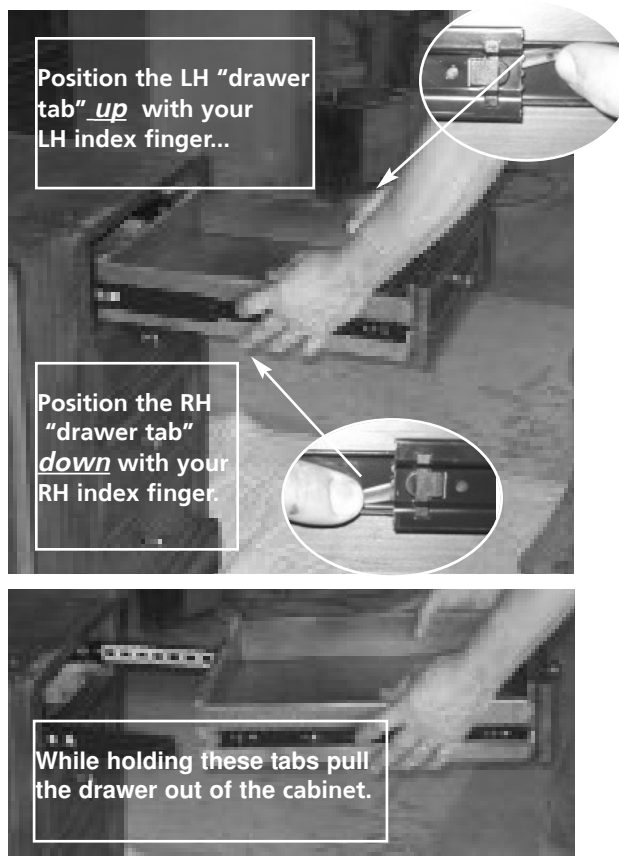
Lower Storage Unit
Upper Storage Unit with pocket doors
6 Allen head attachment bolts
2 optional lower wood center door panels
2 optional upper black speaker cloth center door panels
12 wood drawer dividers and 18 wood storage stops
3 glass panels for adjustable wood framed shelves

SETTING UP THE TV CABINET

LOWER STORAGE UNIT

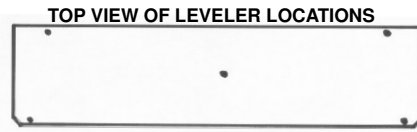
To begin the process of leveling your cabinet remove the lower right hand and left hand drawers by:

Extend drawer fully out.



LOWER STORAGE UNIT

Locate the four leveler access holes in the base panel (one in each corner) plus one in the middle of the cabinet behind the center doors.



Level the "lower storage unit" by inserting the leveler wrench *provided* and attach it to the top of the leveling stem.

Turn wrench to raise (*clockwise*) or lower (*counter clock wise*) the cabinet. Level the cabinet left to right and front to back.

Insure that the middle located leveler is simply tight against the floor. This leveler is designed to prevent cabinet sag and is not an integral part of the cabinet leveling procedure.



Re-install the drawers by:

Extend the sliding drawer track located inside the case fully out. Move the sliding silver colored portion fully forward.

Simultaneously place the metal drawer track located on the drawer into the sliding drawer track located on the case on both LH and RH sides.

Push the drawer completely into the case firmly. Open then close the drawer a couple of times to insure it is tracking properly. If not repeat the process while insuring the metal track is aligned properly.

LOWER STORAGE UNIT

Your "lower storage unit" comes with beveled glass door panels in place to allow remote control access to stored electronic components.

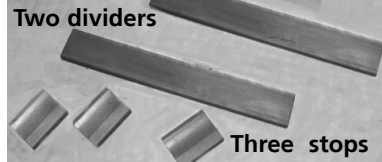
If wood center door panels are preferred simply remove the door panel clips that hold the glass panels in place with a Phillips head screwdriver, take out the glass panels.

Then, substitute the wood panels (provided) and re-attach the door panel clips.



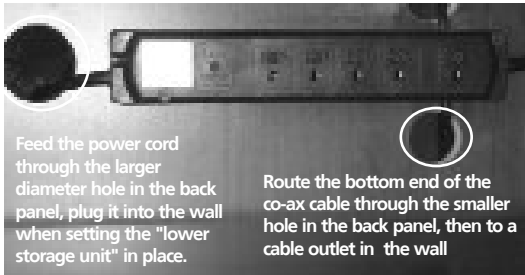
Each drawer is designed to accommodate CD's, DVD's etc. in an organized flexible manner with the use of Velcro bottom moveable dividers and storage stops.

Arrange as preferred. Each drawer comes with



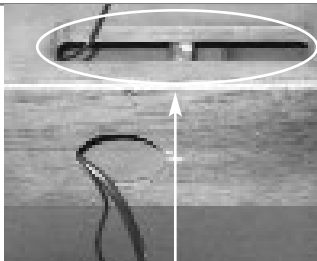
SURGE SUPPRESSOR

This unit is equipped with a 5 outlet surge suppressor which includes a power cord and co-ax cable attachment.



Feed the power cord through the larger diameter hole in the back panel, plug it into the wall when setting the "lower storage unit" in place.

Route the bottom end of the co-ax cable through the smaller hole in the back panel, then to a cable outlet in the wall



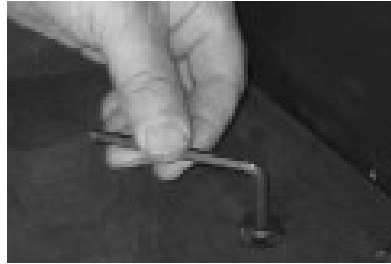
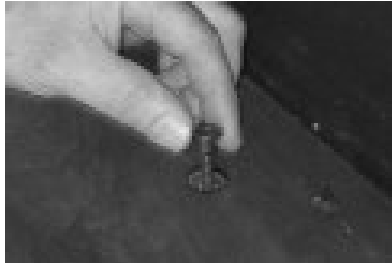
Once the "upper storage unit" is in place route the top end of the co-ax cable through the access hole in the top of the "lower storage unit" then into the bottom of the "upper storage unit" and into the TV.

UPPER STORAGE UNIT

The "upper storage unit" accommodates the TV. It bolts to the "lower storage unit" at six locations (see drawing below) with Allen bolts (enclosed) that are inserted through the holes provided in the bottom panel then into threaded inserts located in the top of the "lower storage unit".



Top View of Bottom Panel of Upper Unit



NOTE: This unit is quite heavy and requires four people to move in place. Once positioned on top of the lower unit align the bolt holes with the threaded inserts located in the top of the "lower storage unit", insert the Allen bolts and tighten with the Allen wrench provided.

The top doors of your "upper storage unit" come with wood center door panels in place. Audio speakers may be stored behind these doors. If audio speaker storage is preferred, interchangeable speaker cloth panels (enclosed) may be substituted for the wood center door panels. To interchange these panels simply remove the door panel clips that hold the wood panels in place with a Phillips head screw driver, take out the wood panels substitute the speaker cloth panels and re-attach the door panel clips.



UPPER STORAGE UNIT

When opening the bi-fold pocket doors follow these steps:

NOTE: (These steps and pictures relate only to the left hand set of doors. The same process should be followed when opening and closing the right hand set of doors).

Position your right hand on the far right hand door knob and your left hand on the far left hand door knob.

Pull the left knob back toward you while swinging the door panel assembly to the left.



With your hand on the right hand door knob, fold the right hand door panel section up against the back side of the left hand door panel section.



Push the entire door assembly straight back into the door pocket.



CURVED SOUND BOARD

This unit is designed to enhance your audio experience by more efficiently directing sound from your television to the viewing area. To install it follow these steps:



Remove the upper and lower magnetic door catches located in the TV storage area.

Note: It is suggested that you place a piece of tape temporarily behind the magnetic catch marking its front to back location so it's easier to re-locate and re-attach the magnetic catches after the *curved sound board* has been placed in position.



With two people, lift the unit up, set the unit down on top of the lower cabinet and slide the *curved sound board* back into the cabinet interior as far back as possible.



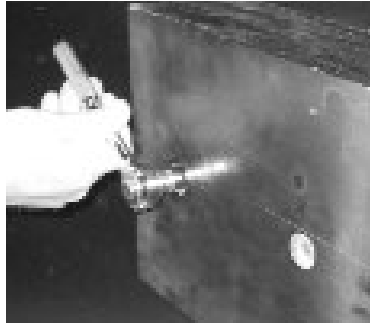
CURVED SOUND BOARD

The curved sound board is designed to accept Sanus or Omni Mount TV wall hanging brackets. These hanging brackets are available at most audio-visual retailers and allow you to suspend your TV in the middle of the curved sound board.

(FYI: You also have the option of just letting your TV sit on a stand and placing the stand on top of the cabinet unsuspending).

See your audio-visual dealer for the installation of the Sanus or Omni Mount TV wall hanging brackets. These brackets are not provided with the furniture.

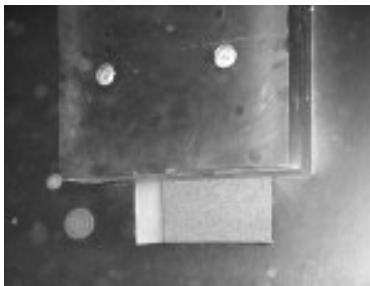
The center of the curved sound board is equipped with a mounting block that is designed to accept Sanus or Omni Mount TV wall hanging brackets. This block also serves the purpose of positioning the TV far enough forward to prevent the ends of the TV from hitting the tangent points of the curved sound board face.



The front portion of this block can be removed to accommodate narrower thin screen TV's. The front block should stay in position to accommodate wide TV models. If the front portion is not needed it may be removed by simply removing the face bolts.



Below the mounting block is a generous wire management opening that allows electrical wires to be routed behind the curved sound board and through an opening in the top surface to gain access to the electronic component storage area behind the doors of the lower cabinet.

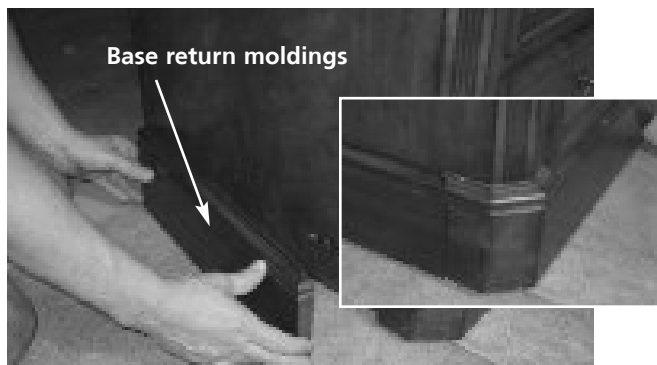
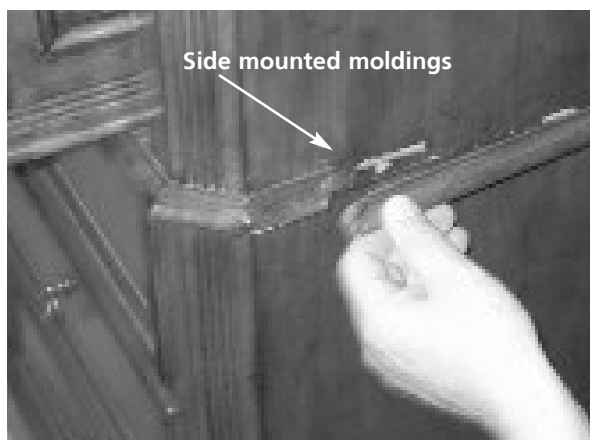


SIDE STORAGE CABINETS

The side storage cabinets for the Bi-Fold Pocket Door TV cabinet are designed to provide additional storage and/or display space. These units fit flush up against the right and left sides of the TV cabinet.

But before you set the side units in place YOU MUST remove the **Side** and **Base** moldings...

To remove these moldings get a firm grip on the molding and simply pull them straight off the cabinet.



SIDE STORAGE CABINETS

Position the side cabinet next to the end of the Bi-Fold Pocket Door TV cabinet.

Place the side cabinets behind the remaining return moldings left in place on the TV cabinet.

Push the side cabinet tightly up against

the TV cabinet.



Locate the four leveler access holes in the base panel (one in each corner). Level the side cabinet by inserting the leveler wrench provided and attach it to the top of the leveling stem. Turn wrench to raise (clockwise) or lower (counter clockwise) the cabinet. Level the cabinet left to right and front to back to eliminate any remaining gaps between the cabinet and the side cabinets.

LIGHTING

Display lights are located in the cornice of the side cabinets. Activate these lights by turning the knob located under the top in the front inside corner of the cabinet. *Note: the light fixture cord must be plugged into a wall outlet during installation.*

SHELVES

Adjustable height shelves may be re-located at a different height by removing the screw that holds the metal shelf support to the bottom side of the shelf, removing the shelf from the cabinet, re-locating the metal shelf support to the desired height, re-positioning the shelf on the shelf supports and re-inserting the screw through the shelf support and into the bottom of the shelf.



Sligh Furniture Company Holland, Michigan www.sligh.com 9/06