

Sligh

Installation Instructions



Family Communications Center

Set Up/Operation Instructions Family Communications Centers



Tools Required

Level
Phillips Head Screw Driver

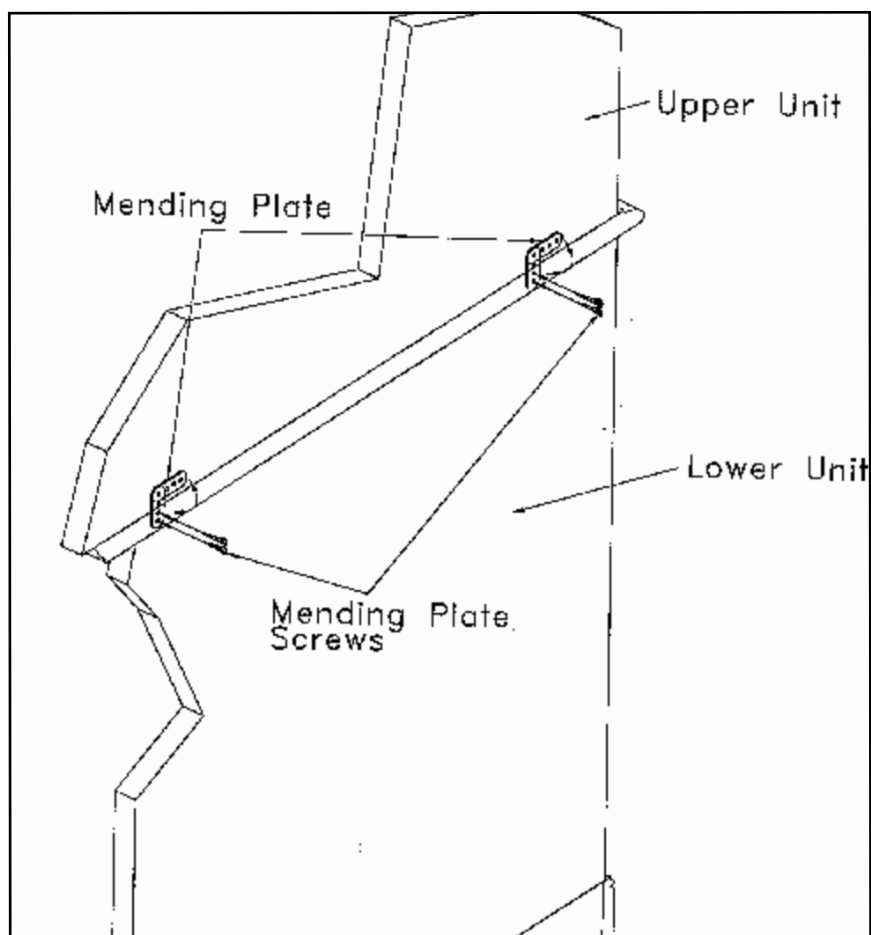
Parts Enclosed

Two 5/8" Long Wood Screws

Disconnect or connect upper unit from/to lower unit for easier in-home installation and safety

Mending plates are included to help prevent the deck from accidentally falling forward and potentially hurting someone or severely damaging the deck unit. Locate these mending plates near the lower edge of the deck unit back panel. Loosen the screw that secures these mending plates to the back panel and rotate one end of the mending plate downward so it bridges the top edge of the lower unit.

Insert one 5/8" wood screw (provided) thru one of the screw holes in each place with a Phillips head screw driver. Reverse these steps to disassemble these units prior to moving the product from the room. Do not move this product in an assembled format.



Wire Management - Electronic Features

This family communication center is equipped with:

Task light

Located below the lower shelf.

6-outlet surge suppressor

Located under a hinged section of the work surface

Lap-top docking station

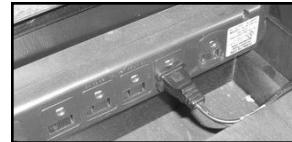
Located under a hinged section of the work surface.

TASK LIGHT

The task light may be activated by simply turning on the roller switch located below the left side.

Route the power cord for the task light through the exit hole to the left of the light fixture, through the access hole on the lower right side of the back panel.

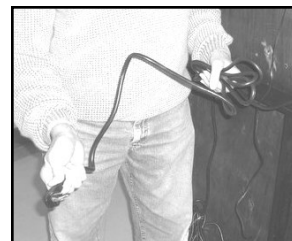
Then insert the plug into the surge suppressor located under the top of the work surface. As an option, the power cord can be plugged directly into a nearby wall outlet.



6-OUTLET SURGE SUPPRESSOR

The surge suppressor serves as a power source for the task light as well as a charging station for personal cell phones, MP3 players, land phones, calculators etc. It is located under a hinged section of the work surface.

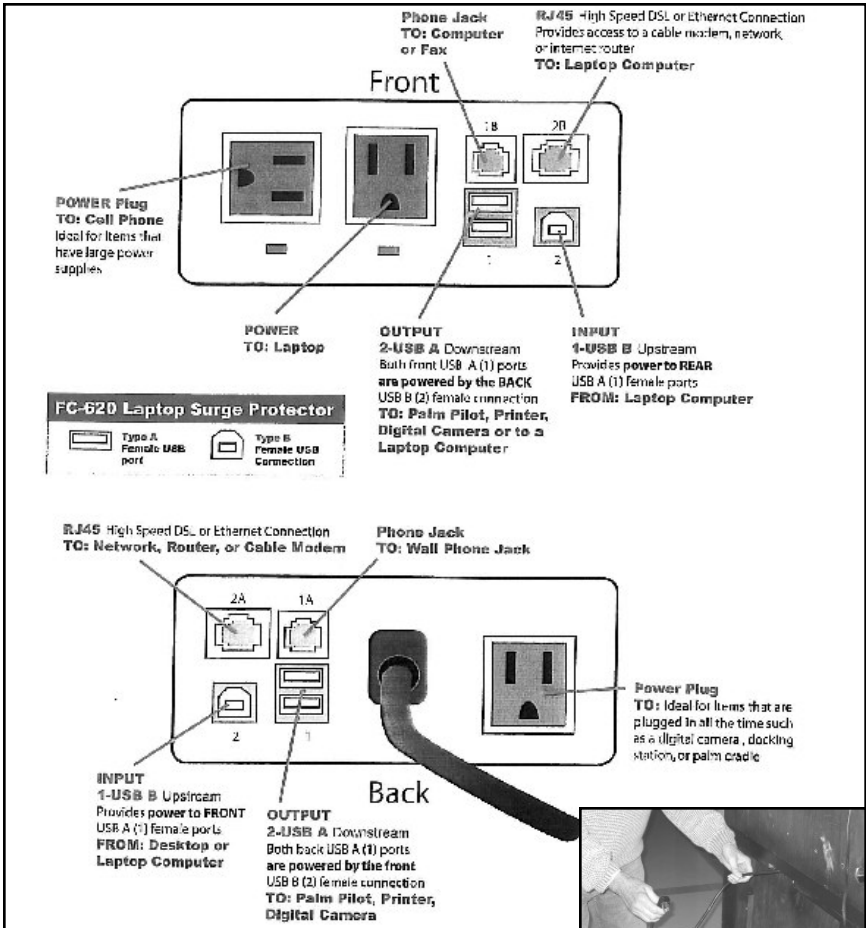
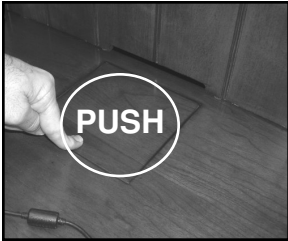
Locate the end of the surge suppressor power cord at the back side of the cabinet and plug it into a nearby wall outlet.



Wire Management - Electronic Features continued

LAP-TOP DOCKING STATION

The lap-top docking station provides for a quick power and high speed internet hook-up as well as data and phone receptacles at front and rear positions.



Locate the end of the lap-top docking station power cord at the back side of the cabinet and plug it into a nearby wall outlet.



Special Features

ADJUSTABLE SHELVING

The storage areas behind the upper hinged doors are a great place to store books. The shelf positions behind these doors are height adjustable. Remove the screws that hold the metal shelf supports in-place. Take the shelf temporarily out of the case, re-adjusting the shelf supports at the desired height and replace the shelf on top of the metal shelf supports and reinstall the screws.



TACK BOARDS

The back side of the upper doors and front edge of the task light apron are faced with tacking surfaces. A great way to pin up family photos, important appointments, business cards, receipts etc.



HANGING TV WIRE ACCESS

Small flip down LCD TV's may be hung from the bottom side of the upper adjustable shelf. A section of the back panel is removable to allow wire access from the back side of the TV, through the back panel and to appropriate wall outlets. Remove this access panel from the back side of case. The height of the adjustable shelf may be adjusted upward to align the back side of the TV with the access hole in the back panel.



Sligh

Sligh Furniture Company Holland, Michigan www.sligh.com 2016-18 6/07