

Sligh

Installation Instructions



Family Communications Center

**Set Up/Operation Instructions
2011-1-BL & BE
Family Communications Center**



Tools Required

Level
Screwdriver

Connect upper unit to lower unit

For safety reasons connect the upper unit to the lower unit. Position the "mending plates" attached to the back panel of the upper unit over the back panel of the lower unit. Insert attachment screws provided. Tighten the mending plate to the upper and lower unit back panel surfaces. Note: Loosen the screw that holds the mending plates in position at receipt to enable re-positioning of the mending plate so it "bridges" the upper and lower units.

Wire Management - Electronic Features

This family communication center is equipped with:

Task light

Located below the lower shelf of the upper unit.

6-outlet surge suppressor

Located under a hinged section of the work surface.

Lap-top docking station

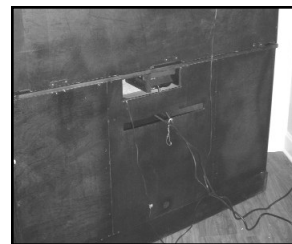
Located under a hinged section of the work surface.

TASK LIGHT

The task light may be activated by simply turning on the roller switch located on the light fixture.



Route the power cord for the task light through the exit hole to the left of the light fixture. It can be plugged into either a nearby wall outlet or the surge suppressor located under a hinged section of the work surface by routing the power cord through the access hole in the back panel.

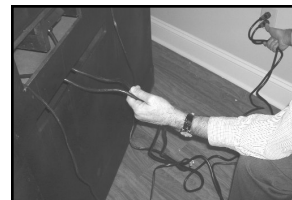


6-OUTLET SURGE SUPPRESSOR

The surge suppressor serves as a power source for the task light as well as a charging station for personal cell phones, MP3 players, land phones, calculators etc.



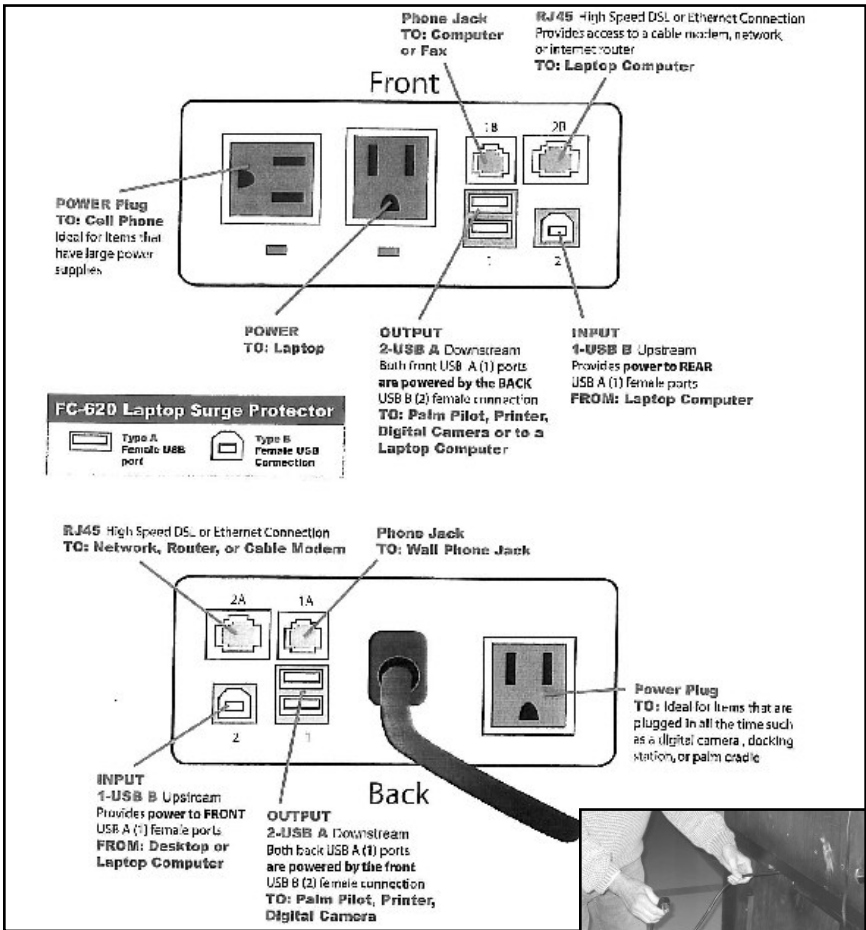
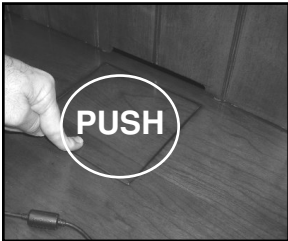
Locate the end of the surge suppressor power cord at the back side of the cabinet and plug it into a nearby wall outlet.



Wire Management - Electronic Features continued

LAP-TOP DOCKING STATION

The lap-top docking station provides for a quick power and high speed internet hook-up as well as data and phone receptacles at front and rear positions.



Locate the end of the lap-top docking station power cord at the back side of the cabinet and plug it into a nearby wall outlet.



Special Features

TACK BOARDS

The back side of the upper doors and front edge of the task light apron are faced with tacking surfaces. A great way to pin up family photos, important appointments, business cards, receipts etc.



TACK BOARD

ADJUSTABLE SHELVING

The storage areas behind the upper hinged doors are a great place to store books. The shelf positions behind these doors are height adjustable. Remove the screws that hold the metal shelf supports in-place, take the shelf temporarily out of the case, re-adjusting the shelf supports at the desired height and replace the metal shelf on top of the shelf supports and reinstall the screws.



TACK BOARD

HANGING TV WIRE ACCESS

Small flip down LCD TV's may be hung from the bottom side of the upper adjustable shelf. A section of the back panel is removable to allow wire access from the back side of the TV, through the back panel and to appropriate wall outlets. This access panel must be removed from the back side of the case. The height of the adjustable shelf may be adjusted upward to align the back side of the TV with the access hole in the back panel.



TV WIRE ACCESS

PULL-OUT LOWER SHELF

A convenient pull-out shelf is located behind the lower center door. This area is appropriate for storing printers, scanners or all-in-one printer-scanner-fax machines. An opening in the back panel of this area allows for wire access to wall outlets or the enclosed surge suppressor.



LOWER PULL-OUT SHELF

Notes

Notes

Sligh

Sligh Furniture Company Holland, Michigan www.sligh.com 2011-1 2/07