

Sligh

Installation Instructions



Family Communications Center

**Set Up/Operation Instructions
2010-1-CO
Family Communications Center**



Tools Required

Level
Allen wrench (provided)

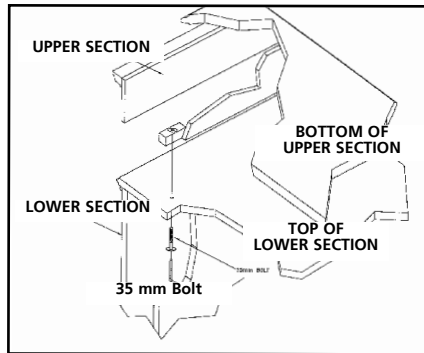
Disconnect upper unit from lower unit for easier in-home installation

The upper unit (which includes the center drawer) may be disconnected from the lower unit by removing *connection bolts* located at four corners under the support panel behind the front columns at the front side...



FRONT SIDE

... and inside the lower panel cavity at the back side. These bolts turn into imbedded threaded inserts. Remove these bolts using the Allen wrench provided.



BACK SIDE

Wire Management - Electronic Features

This family communication center is equipped with:

Task light

Located below the lower shelf.

6-outlet surge suppressor

Located under a hinged lid behind the upper left hand door.

Lap-top docking station

Located under a hinged section of the work surface.

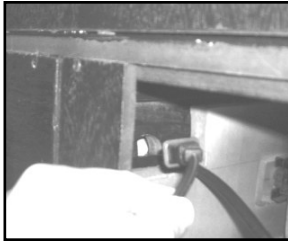
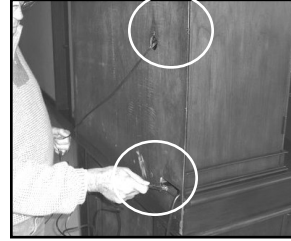
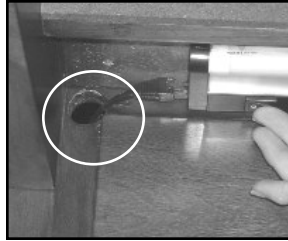
Wire Management - Electronic Feature continued

TASK LIGHT

The task light may be activated by simply turning on the roller switch located below the left side.

Route the power cord for the task light through the exit hole to the left of the light fixture, through the access hole on the lower right side of the back panel.

Then insert the plug into the surge suppressor located behind the top left hand door. As an option, the power cord can be plugged directly into a nearby wall outlet.



6-OUTLET SURGE SUPPRESSOR

The surge suppressor serves as a power source for the task light as well as a charging station for personal cell phones, MP3 players, land phones, calculators etc. It is located under a hinged ledge behind the left hand upper unit door cavity.



HINGED LEDGE



SURGE SUPPRESSOR

Locate the end of the surge suppressor power cord at the back side of the cabinet and plug it into a nearby wall outlet.

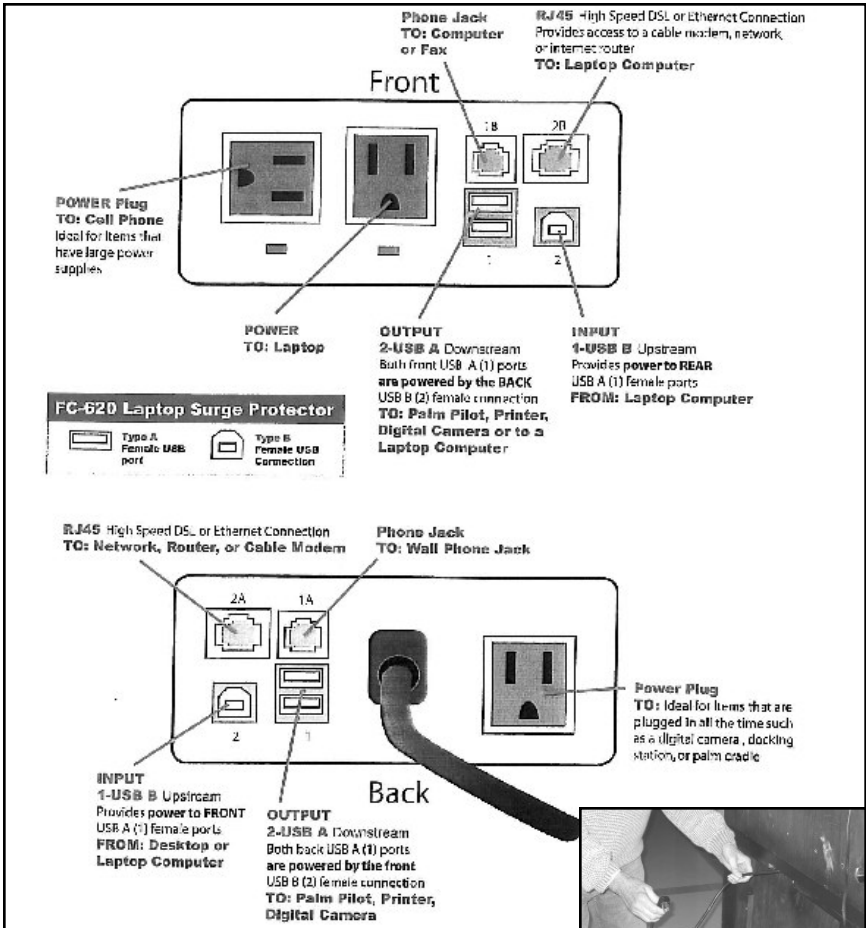
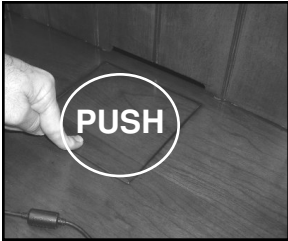


POWER CORD

Wire Management - Electronic Features continued

LAP-TOP DOCKING STATION

The lap-top docking station provides for a quick power and high speed internet hook-up as well as data and phone receptacles at front and rear positions.



Locate the end of the lap-top docking station power cord at the back side of the cabinet and plug it into a nearby wall outlet.



Special Features

REMOVABLE LOWER BACK PANEL

The lower kneehole back panel is positioned with magnetic catches and can be removed to access wall outlets etc. by simply grabbing the hand hold area at the top and pulling firmly forward.



ADJUSTABLE SHELVING

The storage areas behind the upper hinged doors are a great place to store books. The shelf positions behind these doors are height adjustable. Remove the screws that hold the metal shelf supports in-place. Take the shelf temporarily out of the case, re-adjusting the shelf supports at the desired height and replace the shelf on top of the metal shelf supports and reinstall the screws.



TACK BOARDS

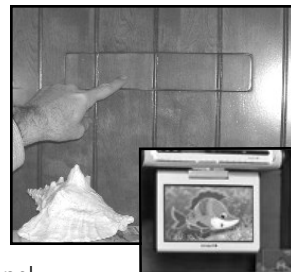
The back side of the upper doors and front edge of the task light apron are faced with tacking surfaces. A great way to pin up family photos, important appointments, business cards, receipts etc.

LEATHER LETTER RACK

A three section leather letter rack located behind the right hand upper door is a great place to store incoming or outgoing mail.

HANGING TV WIRE ACCESS

Small flip down LCD TV's may be hung from the bottom side of the upper adjustable shelf. A section of the back panel is removable to allow wire access from the back side of the TV, through the back panel and to appropriate wall outlets. Remove this access panel from the back side of case. The height of the adjustable shelf may be adjusted upward to align the back side of the TV with the access hole in the back panel.



Sligh

Sligh Furniture Company Holland, Michigan www.sligh.com 2010-1 2/07