

Sligh

Installation Instructions



8051-1-LR
LAREDO DESK

Disassembly Instructions for the 8051-1-LR Desk

Important: Read this instruction booklet prior to beginning.

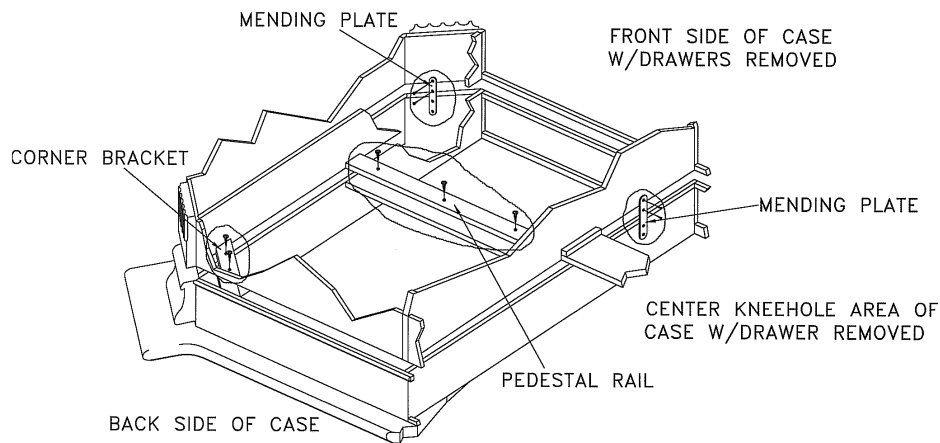


Tools Required

1. Phillips head screw driver

Disassembly Steps

1. Remove the complete set of drawers by:
 - a. Extending drawer fully out.
 - b. Position the LH "drawer tab" up with your LH index finger and the RH "drawer tab" down with your RH index finger.
 - c. While holding these tabs pull the drawer out of the cabinet.
2. Turn the desk upside down and lay it on its top.
3. Free the metal mending plate attachments on the faces of the inside end panels and front inside top corners by removing the two upper screws holding the plates in place.



UPSIDE DOWN CASE

4. Using the Phillips head screwdriver, remove the screws in the rear corner brackets and pedestal rail wood cleats.
5. Once moved to its final destination reverse this process to re-assemble the desk.
6. Re-install the drawers by:
 - a. Extend the sliding drawer track located inside the case fully out.
 - b. Simultaneously place the metal drawer track located on the drawer into the sliding drawer track located on the case on both LH and RH sides.
 - c. Push the drawer completely into the case firmly. Open then close the drawer a couple of times to insure it is tracking properly. If not repeat the process while insuring the metal track is aligned properly.

Sligh

Sligh Furniture Company Holland, Michigan www.sligh.com 8051 11/07