

# INSTALLATION INSTRUCTIONS



Home Living Tahoe Wall System

# Sligh

# 1223 Wall System Assembly / Operation Instructions



**1223-A-TA**  
Large Entertainment Cabinet  
75 1/4"W X 23"D x 88"H



**1223-B-TA**  
Storage Unit  
with Wine Rack  
46 1/2"W X 18"D x 88"H



**1223-C-TA**  
Desk  
36"W x 23"D x 88"H



**1223-D-TA**  
Bookcase with Lower Doors  
36"W x 18"D x 88"H



**1223-E-TA**  
Open Bookcase  
36"W x 18"D x 88"H



**1223-G-TA**  
Bookcase with Lower doors  
22"W x 18"D x 88"H



**1223-K-TU**  
Bookcase with File Drawers  
22"W x 23"D x 88"H



**1223-L-TA**  
Corner Connector  
7"W x 7"D x 88"H



**1223-T-TA**  
Small Entertainment Cabinet  
46 1/2"W X 23"D x 88"H

# 1223 Wall System Tools / Parts

## **IMPORTANT! ALL UNITS**

The base and upper sections of all units are bolted together. The bolts are located under the top of the lower unit and can be removed for easier delivery.

## **Tools Required**

Allen wrench (provided) / Level / Leveling wrench  
Phillips head screw driver / 6' Step ladder

## **Parts Enclosed**

### **1223-A-TA Large Entertainment Cabinet:**

One: leveling wrench  
Two: 5mm Allen head wrench  
Three: ¼" - 20 x 17mm Allen head nut  
Three: ¼" - 20 x 40mm Allen head bolt  
Three: ¼" - 20 x 50mm hex head bolt  
Twelve: Brown plastic hole plugs

### **1223-B-TA Storage Unit with Wine Rack:**

One: leveling wrench  
Two: 5mm Allen head wrench  
Three: ¼" - 20 x 17mm Allen head nut  
Two: ¼" - 20 x 40mm Allen head bolt  
Twelve: Brown plastic hole plugs  
Three: ¼" - 20 x 50mm Allen Bolt

### **1223-C-TA Desk:**

Two: 5mm Allen head wrench  
Three: ¼" - 20 x 17mm Allen head nut  
Three: ¼" - 20 x 50mm Allen head bolt  
Twelve: Brown plastic hole plugs

### **1223-D/E/G/K-TA Bookcases:**

One: leveling wrench  
Two: 5mm Allen head wrench  
Three: ¼" - 20 x 17mm Allen head nut  
Three: ¼" - 20 x 50mm Allen head bolt  
Twelve: Brown plastic hole plugs

### **1223-L-TA Corner Connector:**

Three: ¼" - 20 x 50mm Allen head bolt  
One: 5mm Allen head wrench

### **1223-T-TA Small Entertainment Cabinet:**

One: leveling wrench  
Two: 5mm Allen head wrench  
Three: ¼" - 20 x 40mm Allen head bolt  
Three: ¼" - 20 x 50mm Allen head bolt  
Three: ¼" - 20 x 17mm Allen head bolt  
Twelve: Brown plastic hole plugs

## Take Note

### Large and Small Entertainment Cabinets (A&T)

Equipped with a surge suppressor and an infrared repeater (SmartEye) control box. The infrared repeater (SmartEye) power cord is shipped unattached and is placed in a small box located in the top drawer of the A unit during transit. It is recommended that the power cords for the above devices be plugged into a wall outlet prior to placing these cabinets into position against the wall.

---

### Large and Small Entertainment Cabinets (A & T) Storage Unit with Wine Rack (B)

The *upper* and *lower* sections ships in separate cartons and must be bolted together after they are set in place.

---

### The Desk (C)

### The Bookcase (D)

### Open Bookcase (E)

### Bookcase w/ Lower Doors (G)

### Bookcase w/ File Drawers (K)

*Ships in one carton* as one unit *but may be broken down into two* sections for easier in-home installation and handling:

To disconnect the upper section from the lower section on these units simply remove the two attachment bolts located through the top/shelf surface at the 30" high level with the Allen wrench provided.

---

### Desk (C)

Equipped with a lap-top port and task light.

# Special Features

## HOME ENTERTAINMENT CABINETS (A&T)

---

### SMARTEYE

The “SmartEye” enables Sligh to maintain the design integrity of the cabinet without sacrificing appearance for function.

It is designed to allow remote control of electronic components stored behind closed doors. It works with previously purchased universal remotes or the standard remote that comes with your electronic component.

*For example: You can adjust the volume or sound track on your DVD player by pointing your hand held remote at the **signal receiver** on the face of the cabinet and pressing the appropriate control button on your remote. All while you are sitting on your sofa watching the TV screen!*

---

#### How it works

The “SmartEye” includes an external signal receiver, internal control box, internal signal emitters and a power cord/transformer.

---

#### Signal Receiver

Typically located in a cross rail just under the top of the cabinet. It receives and transmits a signal from your hand held remote to a signal emitter located near the electronic component storage shelf.

Simply aim your hand held remote at this eyelet.



Signal Receiver

- Note:**
1. An amber light will appear inside the signal receiver to alert you that your command is being transmitted.
  2. This system functions with IR (infrared) remotes only. It does not function with RF (radio frequency) remotes.
  3. The “SmartEye” will transmit a signal within 15’ of your hand held remote.
- 

#### Control Box

Located on the lower section behind the top drawer or under the top surface. Its purpose is to be a power source and help transmit the actual signal from your hand held remote to the electronic component.

Signal emitter cords, the signal receiver cord and the power cord are all plugged into the control box.



Control Box

## Special Features...continued

### HOME ENTERTAINMENT CABINETS (A&T) continued

#### SMARTEYE continued

##### Signal Emitters

Small round electronic devices that are located on the face of the inside end panels near the component storage shelves. Their purpose is to transmit the actual signal to the sensors located inside your electronic components.

**Note:** *The face of your electronic component must be positioned behind the round signal emitters for the "SmartEye" to function. The number of emitters varies depending on the number of storage shelves included inside the cabinet. Almost all cabinets have at least two emitters. Some cabinets have as many as six emitters.*



Signal Emitters

##### Power Cord

It is plugged into the control box when received by the customer. The other end includes a "transformer-box plug" that is intermingled with the power cord for the surge suppressor. Plug this end into a nearby wall outlet or an outlet in the surge suppressor prior to placing the TV console against the wall. The power cord for the surge suppressor must also be plugged into a nearby wall outlet to be operable.

**Note:** *The "SmartEye" will not function unless the power cord is correctly plugged in at both ends. Check to be sure this is the case prior to attempting operation.*



Power Cord

#### FIVE OUTLET SURGE SUPPRESSOR

Located behind the left hand door. Remove this drawer to gain access. It is recommended that TV and electronic support component power cords be plugged into this surge suppressor.

**Note:** *Plug the surge suppressor power cord into a nearby wall outlet prior to positioning the cabinet against the wall.*



#### "MULTI-FLEX MEDIA DRAWERS

Removable dividers and stops to allow flexible storage alternatives for media storage.



## Special Features...continued

### STORAGE UNIT WITH WINE RACK (B)

#### WINE RACK

Ships with the wine rack in place. The wine rack may be removed and replaced with the enclosed adjustable shelf.



### SPEAKER-DRAWER FOR "T" UNIT

The 1223-T-TA Small Entertainment Cabinet includes a combination center channel speaker storage or traditional box storage center drawer. This drawer is equipped with optional *interchangeable speaker cloth or wood front panels*.

Simply move the turnbuckles located on the back side of the drawer front to release this panel and substitute the desired drawer front.

**NOTE:** *Wire Access in drawer back for routing speaker cords. When utilizing the speaker cloth panels open the center drawer by first opening the far right hand drawer then open the center drawer by grasping the exposed finger ledge located on the right edge of the center drawer.*



# Special Features...continued

## DESK (C)

### TASK LIGHTING

The power cord must be plugged into a nearby wall outlet to activate.

### FLIP DOWN DRAWER FRONT

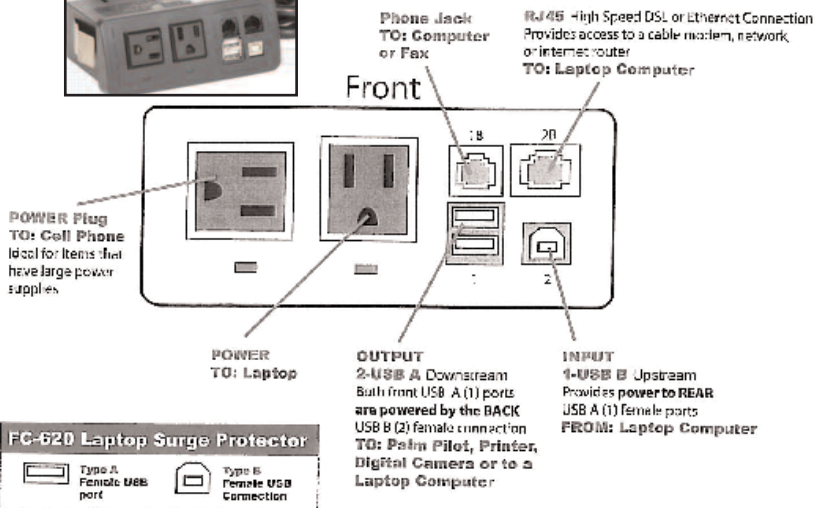
Accommodates computer keyboards.



### LAPTOP DOCKING STATION

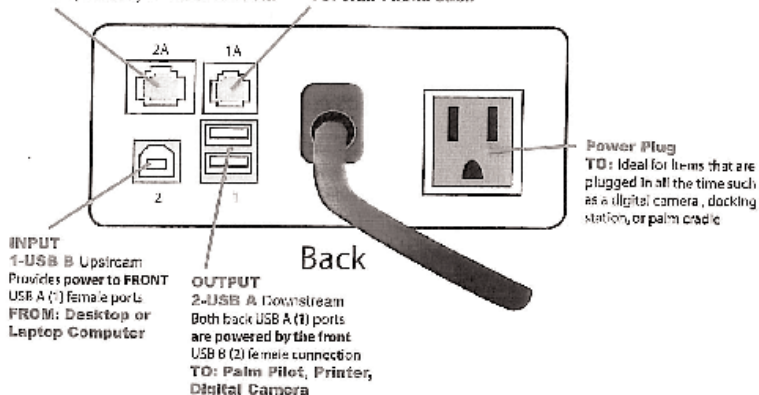
It is located at the rear of the work surface.

It includes two electrical outlets, internet and data ports.



**RJ45 High Speed DSL or Ethernet Connection**  
TO: Network, Router, or Cable Modem

**Phone Jack**  
TO: Wall Phone Jack

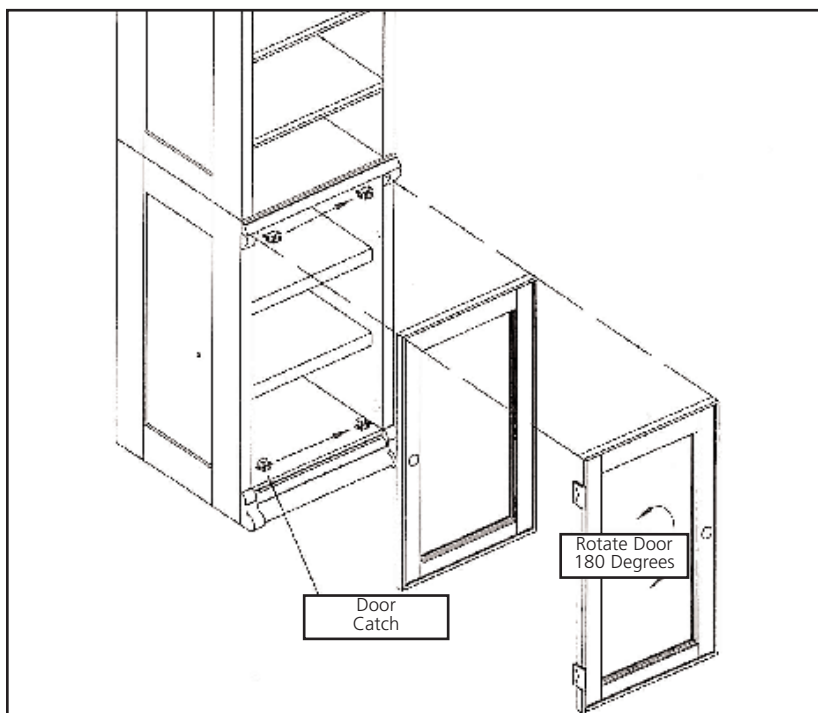


## Special Features...continued

### Bookcase with Lower Door (G)

The lower door on the G unit is reversible and can be hinged on either the left or right side of the cabinet as preferred by the consumer. To change the hinge position of these doors follow these steps:

1. Open the door 90 degrees and remove the screws which hold the door hinges to the case. Take the door off the case and set it aside.
2. Remove the upper and lower door catches, re-position them over the pre-bored location holes on the opposite side of the case opening, re-insert screws and tighten temporarily.
3. Rotate the door position 180 degrees from it's original position. Align the screw holes in the door hinges over the pre-bored location holes on the opposite side of the case opening. Re-insert the hinge screws and tighten with screw driver.
4. Align the male portion of the top and bottom roller catches located on the back side of the door with the female portions already positioned inside the case opening. Adjust the position of the female portions if needed and tighten the attachment screws firmly in place with a screw driver.



## Connecting a Shallow Unit to a Deeper Unit

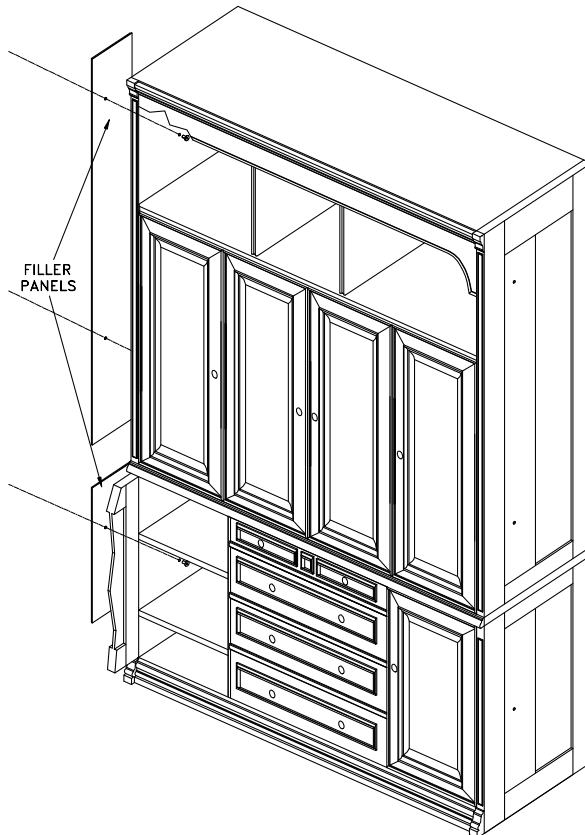
### DEEPER:

**Entertainment Cabinet (A) / Desk (C) / Bookcase with File Drawers (K) / Small Entertainment Cabinet (T)** come with "filler panels" in place when received. These filler panels are designed to fill the void created within the inside area of the framed side panels when a shallow unit is placed next to a deeper unit.

*Unit A includes upper and lower filler panels (see below). Units C, K and T include filler panels in only the lower part of the cabinet which is deeper than the shallower upper section.*

### SHALLOW:

**Storage Unit with Wine Rack (B) / Bookcase with Lower Doors (D) / Open Bookcase (E) / Bookcase with Drawers & Lower Doors (F) / Bookcase with Lower Doors (G)**



## Connecting Shallow unit to a Deeper Unit

1. Align cabinets next to each other. Insure the rear edges are parallel to one another.
2. Level each cabinet front to back and side to side. Adjust the level by turning the wrench accessed levelers located at four inside corners with the leveling wrench provided. Turn clockwise to raise and counter clockwise to lower the cabinet.




*Note: The C and L units do not include wrench accessed floor levelers. These units include manual levelers which must be adjusted by hand from underneath the cabinet.*

3. Remove the temporary bolt which holds the filler panels in place during transit on the A, C or K units. Insert a 50mm bolt (provided) into the same hole and turn it through the end panels of both adjacent units with the Allen head wrench provided. Attach a t-nut to the opposite end of the bolt and tighten.

---

**NOTE: If you disassemble your wall system to move it the filler panels will be loose and detach from the cabinets when you remove the connecting bolts. Narrowly separate adjacent cabinets from one another then grasp and remove the filler panels located between cabinets before they fall. Failure to do this could result in minor injury and/or slight damage to the adjacent cabinet.**

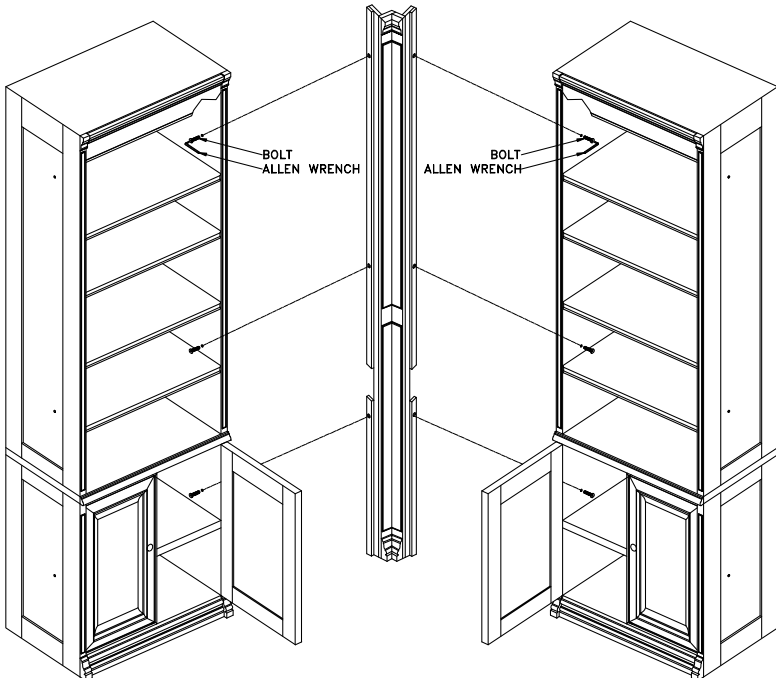
## Connecting Two Shallow Cases Together

1. Align cabinets next to each other. Insure the front and rear edges are parallel to one another.
2. Level each cabinet front to back and side to side. Adjust the level by turning the wrench accessed levelers located at four inside corners with the leveling wrench provided. Turn clockwise to raise and counter clockwise to lower the cabinet. Note: The C and L units do not include wrench accessed floor levelers. These units include manual levelers which must be adjusted by hand from underneath the cabinet. 
3. Insert a 50mm bolt (provided) through the three connecting holes in the end panels. Attach a t-nut to the opposite end of the bolt and tighten with the Allen head wrench provided.

## Connecting Cabinets Around an Inside Corner

### The 1223-L-TU Corner Connector

The Connector is designed to connect shallow units B, D, E and G to each other when connecting these units around an inside corner.



## Connecting Cabinets Around an Inside Corner cont...

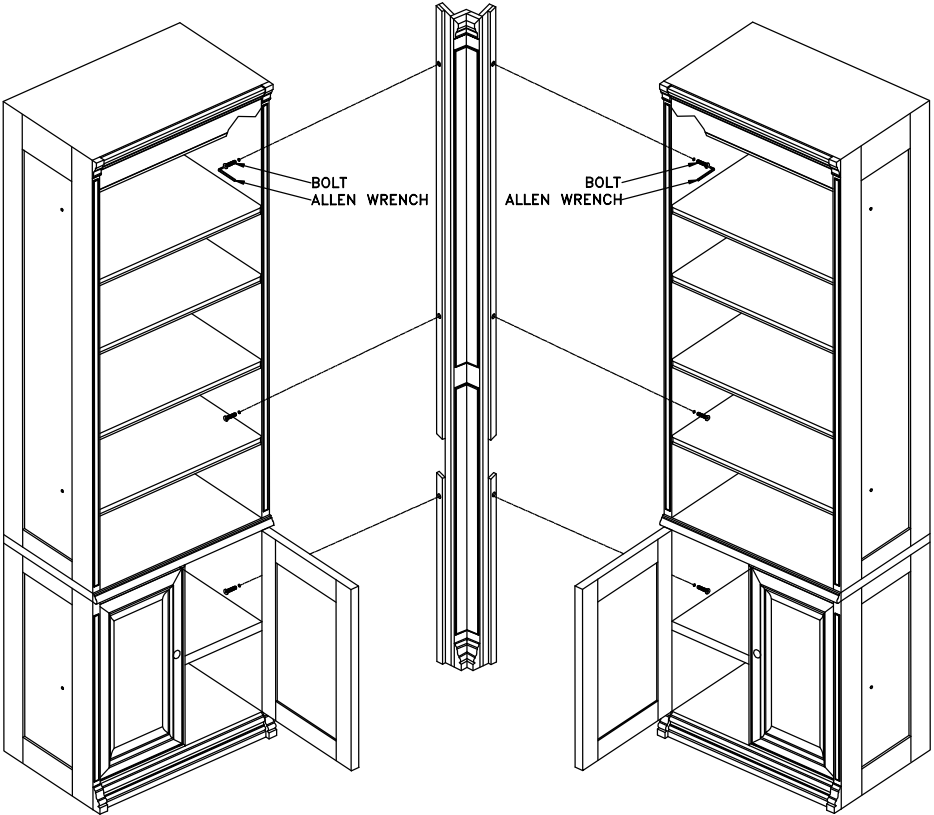
1. Position one cabinet in place near the corner of the wall.
2. Level the cabinet front to back and side to side. Adjust the level by turning the wrench accessed levelers located at four inside corners with the leveling wrench provided. Turn clockwise to raise and counter clockwise to lower the cabinet.



*Note: The L unit does not include wrench accessed floor levelers. This unit includes manual levelers which must be adjusted by hand from underneath.*

3. Use the bolt hole locations for connections to the first unit and the bolt hole locations for the adjacent unit. Tighten with the Allen wrench
4. Position the Corner Connector near the cabinet.
5. Align and insert the protruding bolt shafts on one side of the Corner Connector through the corresponding holes located in the end panel of the cabinet. Attach a t-nut to the opposite end of the bolt and tighten with the Allen head wrench provided.
6. Move the adjacent cabinet into position by aligning the connecting holes in the end panel with the protruding bolt shafts on the other side of the Corner Connector. Level the cabinet front to back and side to side. Adjust the level by turning the wrench accessed levelers located at four inside corners with the leveling wrench provided. Turn clockwise to raise and counter clockwise to lower the cabinet.
7. Push/slide/maneuver the adjacent cabinet to allow the bolt shafts to come through the corresponding holes located in the end panel. Attach a t-nut to the opposite end of the bolts and tighten with the Allen head wrench provided.

# Connecting Cabinets Around an Inside Corner cont...



## Notes

Sligh

Sligh Furniture Company Holland, Michigan [www.sligh.com](http://www.sligh.com) 1223 3/09